



PEARLS OF POLYNESIA

TAHITI TUAMOTUS MARQUESAS
NAPUKA BORA BORA

Aboard the *Clipper Odyssey* | October 18 – November 1, 2009



PRESENTED BY ZEGRAHM EXPEDITIONS



DEAR ADVENTURER

It's no wonder that Melville, Stevenson, Gauguin, and Brel created enduring novels, paintings, and musical lyrics extolling Polynesia. If there is a standard for paradise, then surely these far-flung islands—with their idyllic palm-fanned beaches ringed in waters of indescribable hues—set it. Our **Pearls of Polynesia** voyage is a revelation of this fabled region, from classic Tahiti to the remote atolls of the Tuamotus and Napuka, from the stunning natural wonderlands of the Marquesas to Bora Bora's sapphire lagoons.

Early Polynesians set out from Southeast Asia on a migratory trek across the South Pacific. Sailing in huge double-hulled canoes with pandanus sails these ancient mariners navigated by the sun, stars, and currents, reaching the eastern Pacific some 2,000 years ago. They found fertile islands of incredible beauty, islands exclusively theirs until intrepid captains such as Magellan, Cook, and Bligh, charting their courses with compass and sextant, “discovered” the South Pacific archipelagos from the 16th to 18th centuries.

Join us aboard the superb expedition vessel, *Clipper Odyssey*, as we sail from Tahiti, first to explore the low-lying Tuamotus, boasting one of the largest lagoons on the planet and an ecosystem rich in botanical and avian wonders. On Raroia, imagine Thor Heyerdahl's intrepid voyage on his hand-hewn raft, *Kon Tiki*, and snorkel or dive in the surrounding warm waters to view giant tridacna clams. The Marquesas dazzle with their lushly-carpeted peaks, deep canyons, and exquisite sandy bays. Dancers, drummers, and the blowing of the conch shell continue time-honored traditions of hospitality. Search for rare birds such as the gray-backed, or spectacled, tern and the Marquesas swiftlet, walk among banyan trees and fragrant plumeria, peruse colorful markets, and explore reefs teeming with fish.

The Society Islands—Bora Bora, ringed in sublime sapphire waters; Moorea with its sweeping mountaintop views; and Tahiti with its bustling capital and artistic heritage—cap off this memorable journey. Join our expert naturalists as we sail through Polynesia—one of the few places on the map that truly lives up to the ultimate expectations of our imagination.

Warm regards,



Scott Fitzsimmons
President

“From the tremendous Zodiac trips and the fabulous lectures (I just can't think of enough superlatives!), to the great logistics, the incredible food, and especially for the consistent and friendly can-do attitude of all of the staff, the trip simply couldn't have been any better!”

J.L. Rose



MARQUESAS



RANGIROA



© Kirklandphotos.com



© Jack S. Grove

TUAMOTUS



© G. Le Bacon

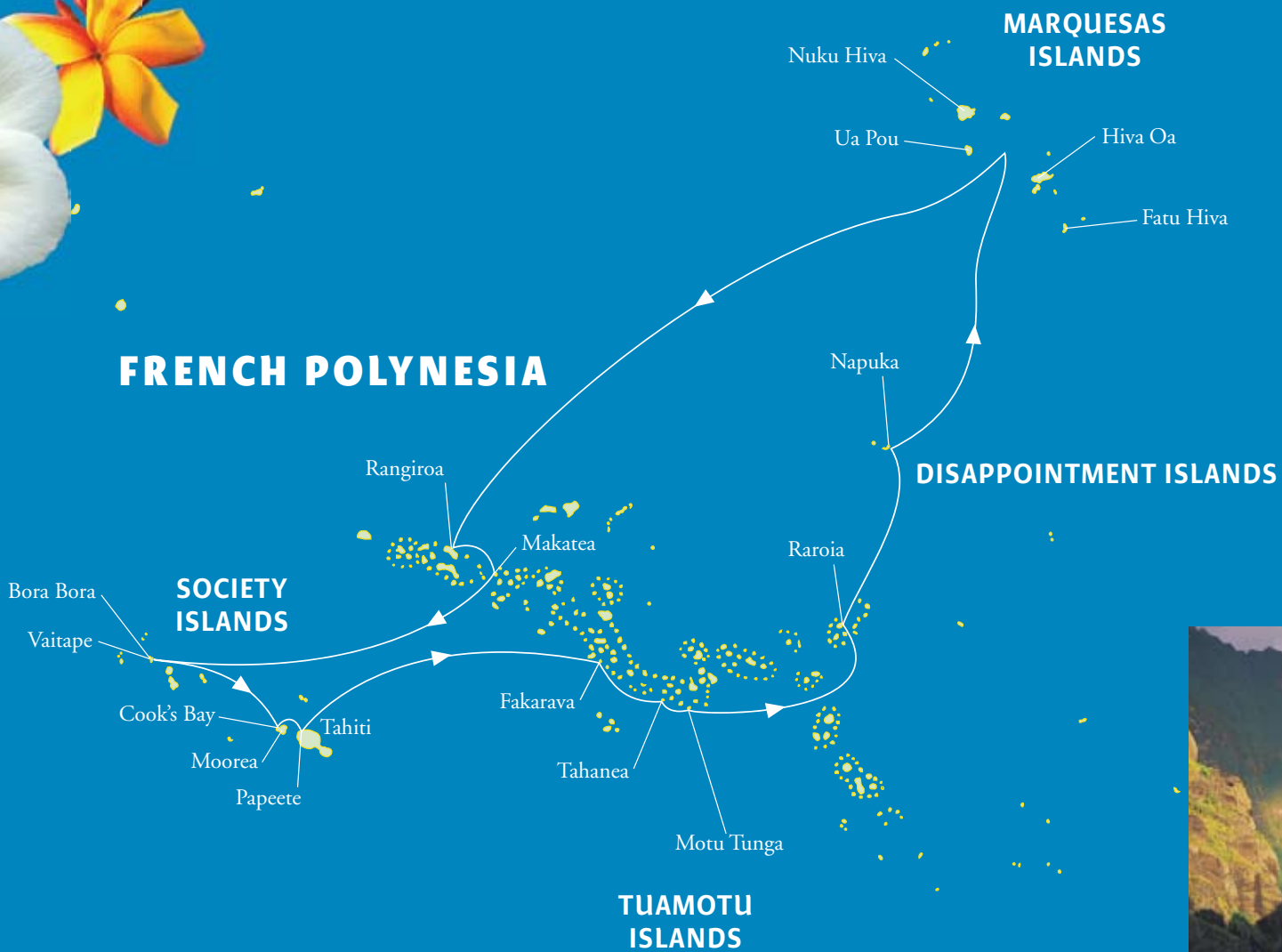


CLOWNFISH

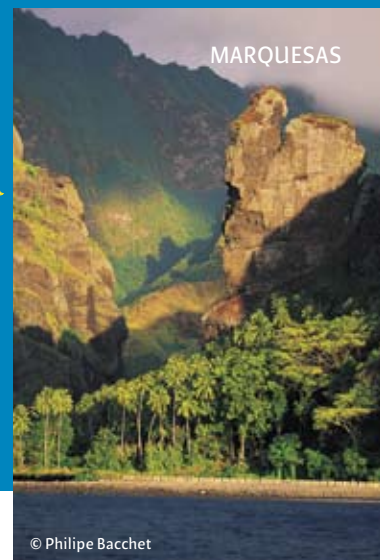
© Natalia Baechtold



FRENCH POLYNESIA



MAP NOT TO SCALE



MARQUESAS

© Philippe Bacchet

PEARLS OF POLYNESIA

Aboard the *Clipper Odyssey*

October 18 – November 1, 2009 | 15 Days

Sunday, October 18, 2009

USA / Papeete, Tahiti, Society Islands

Monday, October 19

Papeete / Embark *Clipper Odyssey*

Tuesday, October 20

Fakarava, Tuamotus

Wednesday, October 21

Tahanea / Motu Tunga

Thursday, October 22

Raroia

Friday, October 23

Napuka, Disappointment Islands

Saturday – Monday, October 24 – 26

Marquesas

Tuesday, October 27

At Sea

Wednesday, October 28

Rangiroa, Tuamotus

Thursday, October 29

Makatea

Friday, October 30

Vaitape, Bora Bora, Society Islands

Saturday, October 31

**Cook's Bay, Moorea / Papeete, Tahiti /
Disembark *Clipper Odyssey***

Sunday, November 1

USA



Behind the Scenes in Moorea

Traditional Polynesian ceremonies are no longer a common occurrence on Moorea. When they occur it is very rare for visitors to participate. We are pleased to offer this once-in-a-lifetime opportunity to get behind the scenes and attend the opening of the Atitia Center on beautiful Cook's Bay. The Center, funded by Seacology—a nonprofit organization dedicated to preserving island environments and cultures—is being constructed in the style of a traditional fare (pronounced far-A), a Polynesian house. It will be used for instruction in traditional Polynesian cultural practices as well as to emphasize the importance of respecting no-fishing restrictions on parts of the Moorea lagoon. The ceremony will consist of traditional singing and dancing, a Tahitian feast, the presentation of traditional tapa cloth gifts, and more. Afterwards we will have the opportunity to snorkel in Moorea lagoon. Our guide for the opening ceremony is Duane Silverstein, the executive director of Seacology, who will accompany us on this voyage.

DAY BY DAY ITINERARY

Sunday, October 18, 2009

USA / Papeete, Tahiti, Society Islands

Depart on your independent flight to Papeete, Tahiti. Transfer to our hotel for dinner and overnight.

Monday, October 19

Papeete / Embark *Clipper Odyssey*

After a morning at leisure and lunch at our hotel, we explore this bustling tropical capital city, beginning with a visit to the superb Museum of Tahiti and Her Islands—dedicated to the history and culture of the people of the South Pacific. We drive past dazzling white sand beaches and the district of Mataiea, where Paul Gauguin lived from 1891–1893. The Gauguin Museum and memorial bring to life his time here through photographs, letters, writings, and household objects, along with reproductions of his paintings. Next we follow the coastal road to the James Norman Hall Home, an exact replica of the original colonial home of the writer famous for the *Mutiny on the Bounty* trilogy. We end our tour at the Papeete pier late this afternoon and embark the *Clipper Odyssey*.

Tuesday, October 20

Fakarava, Tuamotus

Of all the islands in the South Pacific, few have the physical “low profile” of the Tuamotus. These coral constructions rise just high enough above the water to be called land and if it weren’t for their waving coconut palms, they might be entirely invisible from any distance. Joined together, the 76 islands would form a mere 154 square miles of actual land mass. Nine thousand people, known as Paumotu, inhabit just 46 of the islands.

At Fakarava Island we sail through an opening in its wreath of coral and across one of the largest lagoons in the world to the ancient capital of the Tuamotus. Villagers greet us on the beach with flower leis and warrior demonstrations. The pristine ecosystem here is rich in rare birds, plants, and crustaceans and we enjoy a nature walk amid the tropical flora and along the pink sand beaches. Divers explore the waters outside the coral ring, while snorkelers witness the teeming undersea world inside the lagoon.



© T. McKenna



FAKARAVA

© Paulina Grove



© Joe Valencic



RAROIA

© Paulina Grove

Wednesday, October 21

Tahanea / Motu Tunga

Our exploration at Tahanea Atoll offers the chance to spot Fraser’s dolphins and birders search for the endemic Tuamotu sandpiper—the Holy Grail of South Pacific birding. After lunch onboard avid snorkelers and divers return to the water to spy the velvety, rainbow-hued mantles of giant tridacna clams, while birders comb the tropical bush at uninhabited Motu Tunga.

Thursday, October 22

Raroia

This morning we board Zodiacs and explore the low-lying atoll where Thor Heyerdahl’s *Kon Tiki* raft landed in 1947. Watch sporting contests, weaving demonstrations, and learn how *copra*, dried coconut, is produced. Inland, witness trees laden with nesting black noddies. After lunch enjoy beach walks or outstanding snorkeling or diving.

Friday, October 23

Napuka, Disappointment Islands

Magellan, looking to resupply his ship with fresh water, named this island group after

59 days of sailing from Chile’s Straits of Magellan. We comb the beaches of the atoll’s sandy islets and snorkel amidst a rainbow-hued gallery of tropical fish this morning.

Saturday – Monday, October 24 – 26

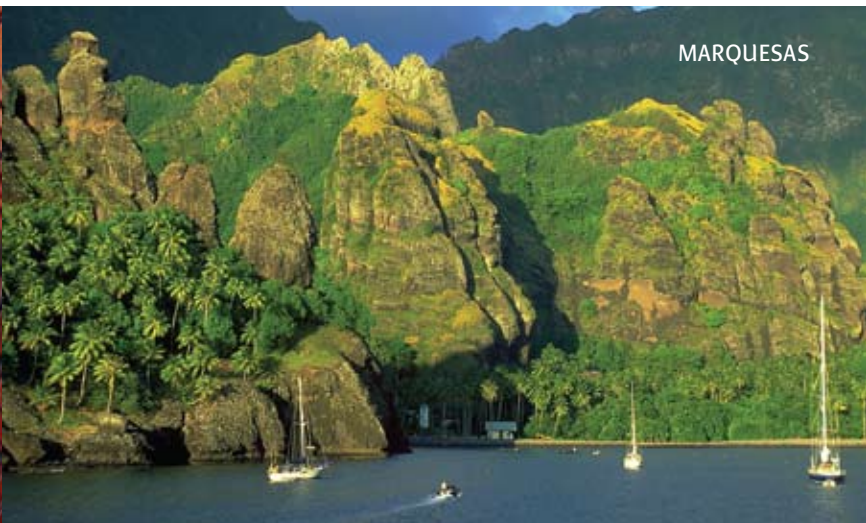
Marquesas

Considered one of the most beautiful island groups in the South Pacific, the Marquesas lie farther from a continental coast than any other islands in the world—3,400 miles from the west coast of South America. They were also far removed from the traditional marine highways used by the 16th- and 17th-century European explorers. Unlike other Polynesian islands, the Marquesas have no surrounding reefs or placid lagoons; wide, deep bays are the havens for vessels such as ours.

Our three days in the region showcase a dazzling collection of islands whose vertical peaks reach into the clouds, while carpets of lush tropical vegetation drape cliffs and canyons that descend to sea-sculpted bays. Countless sooty, fairy, and bridled terns circle tiny, rocky pinnacle islets, and birders will closely scan the scene for the very rare gray-



FATU HIVA



MARQUESAS

© Dick Dewey



FAIRY TERN

© Thomas Baechtold



© Jack S. Grove

backed, or spectacled, tern. Zodiacs whisk us ashore on a variety of islands; we are greeted on some by dancers and drummers adorned in leis and tapa cloth, and welcomed to others by sailors in outrigger canoes blowing large conch shells—the traditional *pu* greeting.

During shore walks, we may see petroglyphs or *tiki* figures—representing deified ancestors—flanked by banyan trees, fragrant plumeria, blooming orchids, and silvery waterfalls. Open-air craft markets display local handicrafts such as baskets, woven purses, shell jewelry, rock tools, and wood carvings. Watch for wild horses on the upland plateaus as we search for the endemic Nuku Hiva pigeon and Marquesas swiftlet. Divers and snorkelers enjoy coral-encrusted rock walls and a staggering variety of fish off islands such as Fatu Hiva, Hiva Oa, Nuku Hiva, and Ua Pou.

Tuesday, October 27
At Sea

As we sail the sapphire waters toward the Tuamotu Islands, our lecture series offers

insight into the natural and cultural wonders of Polynesia.

Wednesday, October 28
Rangiroa, Tuamotus

Rangiroa’s name translates into “far sky.” Here, more than 240 *motu*, or islets—which top off at an elevation of three feet—comprise the ring of coral through which flow at least 100 channels. In the afternoon we enter the lagoon, a dazzling color palette of blues and greens, hailed as one of the world’s greatest dive destinations. Whether by snorkeling, diving, or glass-bottom-boat, unparalleled underwater vistas are a rich reward. Birders watch for the blue lorikeet, red-footed boobies, and great frigatebirds, while beach walkers relax and meet the friendly locals of Tiputa village who demonstrate energetic Tuamotuan dances.

Thursday, October 29
Makatea

In vivid contrast, Makatea is an upraised atoll of eroded limestone cliffs rising some 200 feet from the sea. On shore this morning, on the island plateau, we visit the village which



NUKU HIVA PIGEON

© Peter Harrison



BORA BORA

© Philippe Bacchet



MARQUESAS

© Philippe Bacchet





© Yves Lefevre



© D. Hazama

is home to about 100 Polynesians. Birders scour the hillsides and grottos in search of the endemic Makatea fruit dove in this seabird haven.

Friday, October 30

Vaitape, Bora Bora, Society Islands

Our ship enters the spectacular lagoon of Bora Bora, whose rugged central peak rises dramatically above its white sandy beaches and indigo waters. We have a choice of two excursions onshore this morning. Circle the island in open-air minivans, known locally as “le trucks,” and drive along a 17-mile coral lane lined with hibiscus and fragrant plumeria. Highlights include the Faanui Protestant Church; *marae*, or stone, temples; World War II remnants; and Bloody Mary’s Restaurant. Or, circle the island in open-air, off-road vehicles, learn about the island’s local legends and lore, and photograph Bora Bora’s fabled multi-colored lagoons from isolated panoramic viewpoints. Our local guides point out native flora and fauna and we keep an eye out for the endemic Bora Bora, or chattering, kingfisher.

Return to the ship for lunch and an afternoon of swimming, snorkeling, or diving among the kaleidoscopic reefs, or a chance to further wander the island lanes.

Saturday, October 31

Cook’s Bay, Moorea / Papeete, Tahiti / Disembark *Clipper Odyssey*

After breakfast we disembark in Cook’s Bay where we attend a special Polynesian ceremony for the opening of the Atitia Center. After we enjoy the performance and Tahitian feast, we have the opportunity to snorkel in Moorea lagoon. For more information on this special day see our Behind the Scenes in Moorea panel on the itinerary map.

We return to Papeete in the afternoon to enjoy our final dinner together. Transfer to the airport for independent flights to the USA.

Sunday, November 1

USA

Arrive in the USA in the morning to continue your flights homeward.



BORA BORA

© Kirklandphotos.com



CLOWNFISH

© Thomas Baechtold

TERMS & CONDITIONS

1. Reservations: 25% of the expedition fare, along with a completed and signed Reservation Form, will reserve a place for you on this Zegrahm Expeditions, Inc. (ZE) program. The balance of the expedition fare is due 120 days prior to departure. Air fare is also due at this time. All prices are quoted in U.S. dollars and must be paid in U.S. dollars. Credit cards accepted for deposit only.

2. Cancellation and Refund Policy: Notification of cancellation must be received in writing by ZE. At the time we receive your written cancellation, the following penalties will apply:

- 120 days or more prior to departure:
\$300 per person
- 60 through 119 days prior to departure:
50% of expedition fare
- 1 through 59 days prior to departure:
100% of expedition fare

Some air fare may be nonrefundable. Once an expedition has departed, there will be no refunds from ZE for any unused portions of the trip. The above policy also applies to all extensions and independent travel arrangements made in conjunction with this program.

3. Trip Cancellation and Interruption Insurance: We strongly advise that all travelers purchase trip cancellation and interruption insurance as protection against an emergency that may force you to cancel or leave an expedition while it is in progress. A brochure describing coverage will be sent to you upon receipt of your reservation.

4. Share Policy: Accommodations on all ZE programs are based on double occupancy. If you are traveling alone and wish to share accommodations, a roommate will be assigned to you whenever possible. When pairing roommates, we will always pair participants of the same sex. All shared accommodations are nonsmoking. If it is not possible to pair you with a roommate, you may be asked to pay a single supplement for the land portion of the program.

5. Medical Information: Participation in a ZE program requires that you be in generally good health. It is essential that persons with any medical problems and related dietary restrictions make them known to us well before departure. We can counsel you on whether the expedition you have selected is appropriate for you.

The tour leader has the right to disqualify any participant at any time during the tour if he or she feels the participant is physically incapable and/or if a participant's continued participation will jeopardize either the individual involved or the group. There will be no refund given under these circumstances.

6. Scuba Diving: Limited to the first 16 Advanced Open Water certified scuba divers who complete provided forms; due dates strictly enforced. Must have completed two open water dives within the 12 months prior to trip departure.

7. Luggage Restrictions: Luggage size and weight limitations for both checked and carry-on luggage, imposed by the airlines or as an operational requirement due to type of aircraft, will apply for flights to/from/within this program. Specifications will be provided with pre-departure materials.

8. Fuel Cost Increases and Currency Fluctuation: In order to keep rates as low as possible, we do not build into the trip fare an allowance to cover possible increases from fuel costs or currency fluctuations. **Therefore, as fuel-cost increases may occur and currencies do fluctuate around the world, it may be necessary for us to initiate a rate surcharge at any time before departure if there are exceptional cost increases beyond our control.**

9. Itinerary Changes & Trip Delay: Itineraries are based on information available at the time of printing and are subject to change. ZE reserves the right to change a program's dates, staff, itineraries, or accommodations as conditions warrant. If a trip must be delayed or the itinerary changed due to bad weather, road conditions, transportation delays, government intervention, airline schedules, sickness, or other contingency for which ZE or its agents cannot make provision, the cost of delays or changes is not included.

10. Itinerary Cancellation: ZE reserves the right to cancel an itinerary before departure for any reason whatsoever, including too few participants or logistical problems such as strikes, wars, acts of God, or any other circumstances that may make operation of the trip inadvisable. All trip payments received will be promptly refunded, and this refund will be the limit of ZE's liability. ZE is not responsible for any expenses incurred by trip members in preparing for the trip, including nonrefundable or penalty-carrying airline tickets, special clothing, visa or passport fees, or other trip-related expenses.

11. Participation: ZE reserves the right to decline to accept any individual as a trip member for any reason whatsoever.

12. Limitations of Liability: This section defines ZE's responsibility with respect to all of our trips, including extensions and independent arrangements. Please read it carefully.

ZE, its Owners, Agents, and Employees give notice that they act only as the agent for the owners, contractors, and suppliers providing means of transportation and/or all other related travel services and assume no responsibility howsoever caused for injury, loss, or damage to person or property in connection with any service resulting directly from: acts of God, detention, annoyance, delays, expenses arising from quarantine, strikes, thefts, pilferage, force majeure, failure of any means of conveyance to arrive or depart as scheduled, civil disturbances, terrorism, government restrictions or regulations, and discrepancies or changes in transit or hotel services over which it has no control. Reasonable changes in the itinerary may be made where deemed advisable for the comfort and well-being of the passengers.

As described in item 8 above, all prices are subject to change.

As described in item 10 above, in the event that an expedition must be cancelled, ZE is not responsible for any personal expenses incurred by trip members in preparing for the program.

Certain ship owners require use of preprinted ticket forms that limit the ship owner's and operator's liability. When such tickets are used, you are generally bound by the terms of these tickets with respect to your legal relationship to the owner and operators of the ship, their agent (ZE), and the ship's crew.

On advancement of deposit to ZE, the depositor acknowledges that he/she has read and understands the above recited terms and conditions, and agrees to be bound by them.

WHAT TO EXPECT

For most activities a moderate level of exertion is required. During this expedition you will have opportunities to snorkel and/or dive over some of the world's most colorful reefs, as well as hike along remote beaches and amidst lush island forests. You will need to climb into and out of Zodiacs and tenders for diving and snorkeling activities and excursions ashore (there will be staff and crew members on hand to assist). Ashore, you must be able to walk moderate distances over beaches and sometimes rough terrain.

As on all Zegrahm voyages, you will travel in the company of experienced leaders and a renowned lecture team of naturalists and historians who add insight to both the cultural and natural wonders we encounter along the way. Average daily temperatures will range from the low to upper 80s°F throughout our itinerary, with nighttime temperatures in the low to mid-70s°F. We will mail a complete list of recommended clothing and a suggested reading list to you approximately five months prior to departure. Participants will most enjoy the remarkable opportunities this expedition offers if they travel with a spirit of adventure.



LEADERS

Especially chosen for this voyage, our team of expert leaders and lecturers serves to bring a comprehensive educational component to your adventure through lectures, guided excursions, and daily recaps.

John Yersin (Expedition Leader) – John’s love of travel and life on the sea evolved during his 33 years as an industrial microbiologist in Britain, Europe, the Middle East, and Far East. After graduating from Exeter University in England, John conducted marine, freshwater, and terrestrial surveys; the tools of his trade—diving, hovercraft piloting, and powerboat driving—became foundations for his present work in the travel industry as a lecturer, Zodiac driver, and expedition leader. Since 1998 he has been working on small cruise ships in the wild and pristine parts of the world, from the Arctic to the Antarctic.

Natalia Baechtold – A native Australian, Natalia travels the world full-time as a PADI-certified dive master and professional photographer. A true love of nature and travel has allowed her to indulge her photographic eye in dramatic land and seascapes, as well as focus on the individuality of the world’s indigenous peoples. Working as a professional videographer, Natalia has also produced many underwater videos, capturing the abundance of marine biodiversity across the South Pacific region.

Thomas Baechtold – Thomas’ career as a dive instructor, underwater cameraman, and trip director aboard expedition ships and live-aboard dive vessels has taken him to hot spots such as the Great Barrier Reef, many of the Pacific islands, Malaysia, Thailand, Belize, and Zanzibar. He has spent the last few years exploring the world with Zegrahm Expeditions and continues to work as a freelance photographer and videographer, publishing many of his images in a variety of media.

Greg Homel – A birder-naturalist since early childhood, Greg now travels the world on a full-time basis in search of rare and little-known birds and wildlife, which he presents through digital lecture series, television, and publications. Since 1990 he has guided, educated, and inspired travelers in over 80 countries throughout the world. Greg has personally seen over 50 percent of the planet’s roughly 9,800 bird species in the wild.

Thomas Mangelsen – Tom has traveled throughout the world for decades, photographing animals in their natural habitats. His work has been published in a number of magazines and books, and has been exhibited in museums as well as in his own galleries. Winner of NANPA’s Outstanding Nature Photographer of the Year award for 2000, Tom also received an honorary fellowship from the Royal Photographic Society in 2002. His knowledge and expertise, the result of years honing his craft, will greatly enhance our travels.

Duane Silverstein – Duane is the executive director of Seacology, dedicated to preserving the environments and cultures of islands throughout the world. For 20 years prior, he was executive director of California’s philanthropic Goldman Fund, and head of the Goldman Environmental Prize, often dubbed the “Nobel Prize of the Environment.” Duane has visited over 100 islands and has been the first westerner to visit several remote island villages; his work has been covered in publications as diverse as *TIME*, *The Bangkok Post*, *The San Francisco Chronicle*, and *The Explorer’s Journal*. He holds PADI, NAUI, and SSI scuba certifications and is a National Fellow of The Explorers Club.

Craig Ward – A dive instructor, marine biologist, and ship captain, Craig has also spent the past 12 years involved in marine research and education throughout the Indo-Pacific, particularly the Northern Great Barrier Reef, the Kimberley, Southeast Asia, Papua New Guinea, and New Zealand. Along with running a marine expedition services company, he established a crocodile monitoring program in the Daintree World Heritage area. He currently lives in northern Australia where he is actively involved in conservation research.

Lynne Greig (Cruise Director) – Lynne was born and raised in South Africa; her love for travel led her around the globe, and eventually turned into a career in the adventure travel industry as cruise director. Since 1995 she has traveled from Antarctica to the Arctic, through Africa and the Indian Ocean, Russia, the South Pacific, and Australia. Voyages have taken Lynne to every continent and across every ocean aboard expedition vessels ranging from Russian icebreakers to Australian catamarans.

RESERVATION FORM

Pearls of Polynesia: Tahiti, Tuamotus, Napuka, Marquesas, Bora Bora

October 18 – November 1, 2009

Name #1 (As it appears on passport)

(Preferred Name)

Name #2 (As it appears on passport)

(Preferred Name)

Address

City

State

ZIP

Country

Phone (Home)

(Office)

E-mail

Fax

Cabin Category: 1 2 3 4 5 6 Suite

Accommodations: Twin Share (roommate to be assigned) Single

I am/We are: Nonsmokers Smokers

Scuba Diving: Limited to 16 Advanced Open Water (AOW) certified scuba divers. You must complete two open water dives within the 12 months prior to the trip's departure.

_____ I am/will be an AOW certified scuba diver and I intend to dive on this program.
(Name)

_____ I am/will be an AOW certified scuba diver and I intend to dive on this program.
(Name)

Deposit Information:

Enclosed is a deposit check for \$ _____ (25% per person of the program fare)

Charge 25% deposit per person to: VISA MasterCard American Express

Card Number

Expires

Authorized Cardholder Signature

Date

Note: Credit cards accepted for deposit only.

I/We have read and understand the enclosed Terms & Conditions for this program, and agree to abide by them.

Signature

Date

Signature

Date

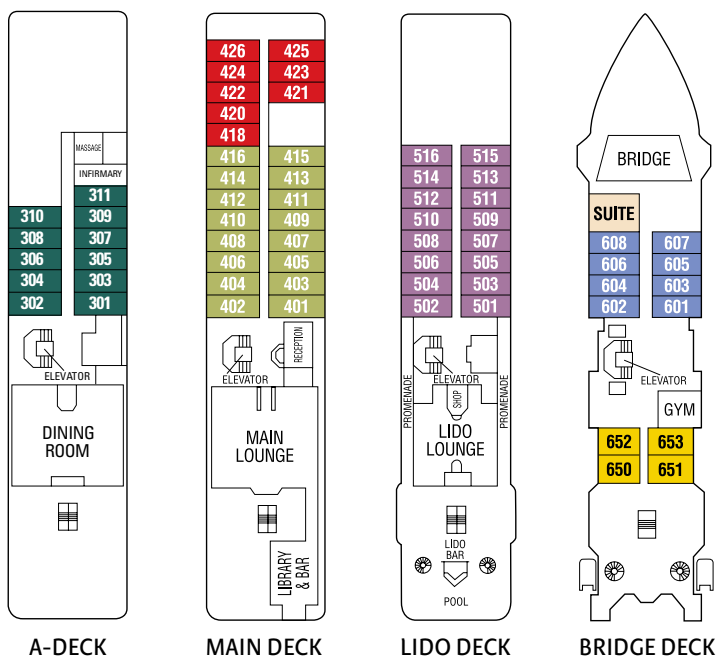
Please complete and return this Reservation Form with your deposit of 25% per person of the program fare to:

ZEGRAHM EXPEDITIONS

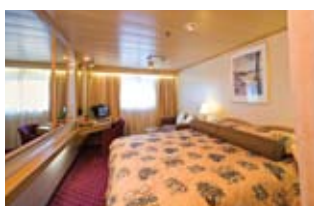
192 Nickerson Street #200 • Seattle, WA 98109 USA • tel: (800) 628-8747 or (206) 285-4000
fax: (206) 285-5037 • e-mail: zoe@zeco.com • web: www.zeco.com

Reservation requests may also be made online at www.zeco.com

CLIPPER ODYSSEY DECK PLAN



Main Lounge



Category 3 Cabin



Dining Room

RATES

Category 1	\$9,980	Category 6	\$12,880
Category 2	\$10,480	Suite	\$15,980
Category 3	\$10,980	Single/Cat 2	\$15,980
Category 4	\$11,480	Single/Cat 3	\$16,980
Category 5	\$11,980		

Limited singles available at the quoted single rate above. Additional singles may be available at 1.7 times the share rate (suite not applicable).

Included: Accommodations in our hotels and on board *Clipper Odyssey* as outlined in the itinerary; all onboard meals; all group meals on land; group transfers; services of the expedition staff, including lectures, briefings, slide/film shows; all group activities and excursions; landing and port fees; all gratuities.

Not Included: All air transportation; excess baggage charges; airport arrival and departure taxes; transfers for independent arrivals and departures; passport and/or visa fees; travel insurance; items of a personal nature such as laundry, bar charges, alcoholic beverages, e-mail/fax/telephone charges; scuba diving fees and equipment where required.

Air Fare: A tentative flight schedule is available upon request. Zegrahm Expeditions will contact you approximately 180 days prior to the departure of this program to finalize your flight plans. As of July 2008, the approximate economy air fare as listed in the itinerary is \$1,575 for Los Angeles / Papeete / Los Angeles. Additional fares from other cities will be quoted as needed.

All rates are per person, quoted in U.S. dollars, and must be paid in U.S. dollars. Rates and itineraries are subject to change.



ABOARD THE CLIPPER ODYSSEY

From a distance, a volcano carpeted in emerald foliage rises skyward. A coral wreath encircles a lagoon the color of sapphires. And a white sandy beach glints in the morning sunshine. As the 110-passenger *Clipper Odyssey* makes its approach, you're up on deck, camera in hand, capturing the quintessence of paradise.

A fleet of Zodiacs quickly lowers into the water; you skim across the short distance and step ashore to the traditional welcome of a conch shell trumpet and dancing villagers. An effortless return brings us back for lunch and a chance to grab snorkel or dive gear—or set out in the glass-bottom boat—for an excursion into a coral wonderland. Afternoon lectures in the spacious lounge offer local insight, and the friendly staff ensures every comfort. Join the expedition team for cocktails and daily recap, then meet new friends in the gracious dining room for dinner. The Captain and his able crew sail onward, and the *Clipper Odyssey's* INMARSAT and C-band worldwide telecommunications system allows us the ease of 24-hour e-mail, telephone, internet, and fax communication.

Step outside to gaze at the stars before retiring to your spacious, ocean-view cabin with en suite facilities, sofa and sitting area, and comfortable queen or twin beds. In the morning, new wonders await in this dreamy tropical world. You're on deck, making sure it's still real...

Ship registry: Bahamas



PEARLS OF POLYNESIA

TAHITI TUAMOTUS MARQUESAS NAPUKA BORA BORA

Aboard the *Clipper Odyssey* | October 18 – November 1, 2009

Distinctive Journeys

Distinctive Journeys - A Virtuoso Travel Company
270 Mars Hill Rd. • Powder Springs, GA 30127
www.distinctive-journeys.com



PRSR STD
U.S. POSTAGE
PAID
SEATTLE, WA
PERMIT NO. 5260